



District Health Department No. 4
Prevent. Promote. Protect

For Immediate Release

April 28th, 2025

Free Water Sample Test Kits for Cheboygan Residents Affected by Flooding

District Health Department No. 4 is partnering with LMAS District Health Department to offer free water sample test kits to residents who have been affected by recent flooding in Cheboygan County and the upper part of Presque Isle County in the Black Lake. These free water sample test kits are available while supplies last. Providing residential water well sampling is a priority for the State Emergency Operation Center (SEOC) for those counties that have requested, due to wells being impacted by flood waters.

Residents may pick up sample bottles at our Cheboygan office located at 825 S Huron St, Suite 1 Cheboygan, MI 49721.

Sampling Schedule:

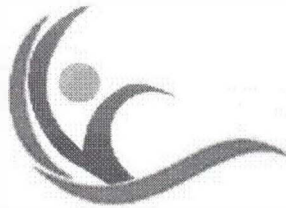
- Collect samples after 10:00 AM Sunday for drop-off at the office by Monday at noon.
- Collect samples after 7:00 AM Tuesday for drop-off at the office by Wednesday at 10:00 AM.

The requisition form for the test is located on our flooding resources webpage (<https://www.dhd4.org/flooding-resources>). This will need to be turned in when dropping off the collected samples.

For residents who may have additional questions, please call us at 1-800-221-0294.

###

To request an interview, please visit our website (dhd4.org) and fill out the [Media Request Form](#).



District Health Department No. 4
Prevent. Promote. Protect

For Immediate Release
April 17, 2026

Protecting Your Well After Flooding

DHD4 Urges Residents to Inspect Their Wells and Drinking Water Amid Flood Conditions

With recent flooding occurring across our four-county district, District Health Department No. 4 (DHD4) is informing residents that emergencies such as floods and power outages can make well water unsafe to drink.

“If your well has been flooded or there is standing water around your well casing, you cannot rule out the possibility of contamination in your well or water system without testing it for coliform bacteria,” says Joe Scheele, Environmental Health Director at DHD4. “It is important to test from the pressure tank, as that is typically the first spot a homeowner can draw water from and is indicative of the water quality coming directly from the well.”

If flooding occurs around your well, your drinking water may become contaminated. Wells in pits are especially at risk. Dirty water can enter through the well cap or vent. This can increase the risk of illness. Flood water may carry bacteria, viruses, sewage, organic debris, pesticides, and other chemicals. If you suspect your water is unsafe, you should obtain water from a known, safe source for drinking, cooking, and preparing food.

What to do Immediately:

- Do NOT drink the water,
- Use bottled water or water from a safe source,
- Boil water for at least five minutes, if necessary.

Well Care After Flooding:

- Remove debris from around the well,
- Flush the system using a hose for at least two hours after water clears,
- Once clear, flush all home plumbing,
- Do not turn on your system until after a professional has inspected it, flood water can damage wiring and pumps, increasing the risk of electric shock.

Disinfect the Well:

- Have a professional registered well contractor disinfect drilled, driven, or bored wells.

If you have questions about your private water supply, please call DHD4 at 1-800-221-0294.

To help keep your water supply safe year-round, test your water annually and monitor any changes in taste, smell or clarity.

###

To request an interview, please visit our website (dhd4.org) and fill out the [Media Request Form](#).

Serving Alpena, Cheboygan, Montmorency and Presque Isle Counties

1-800-221-0294

www.dhd4.org

Hello Presque Isle County residents, this is Tim Pritchard the Emergency Manager Coordinator. Myself, Presque Isle Sheriff Dept. and Presque Isle County Road Commission are advising residents to be cautious when traveling. The county is monitoring the water situations and the impacts of the high waters on roads, rivers, lakes and ditches. We are urging residents to stay off roads when possible and use extreme caution if needing to travel. Many roads across the county have standing water, some deeper than others, and often deeper than appearing.

Some of the roads with concerns:

Bolton Rd, From North Grand Lake to 634 - water on road.

County RD 441 to US23 – WATER ON ROAD

Herron Rd off McIntosh – WATER ON ROAD

South Portor Rd, south of M68 – CLOSED

Heythaler west of Klee to Grossman Rd – CLOSED

County Rd 451 south of Heythaler to Ristow Rd CLOSED

Quade Rd at Klee Rd CLOSED

Klee Rd between Wenzel and M-68 -- CLOSED

Highway 68

Silver Creek Road

I am sure in the days ahead we will be adding and removing roads from this list. Also, I realize there are other roads in the county that have water on them that are not on this list.

We know basements and homes throughout the county are having water issues. Be diligent on protecting your belongings as best you can. If you have concerns regarding your Electrical and Gas, contact your local utility's. **STAY SAFE!**

As I continue to monitor and assess the conditions, In the case of shelters opening, please follow the Presque Isle County Sheriff's Face book page for locations and times.

Please communicate with neighbors, friends and family. Try to stay up to date on local weather and travel advisories.

Thank you

Tim Pritchard
Presque Isle County Emergency Manager Coordinator



Presque Isle County
 Emergency Management
 150 E. Huron St.
 Rogers City, Me49779
picoesc@picounty.org

Tim Pritchard, Emergency Services Coordinator

Declaration of Local "STATE OF EMERGENCY"

To: Deputy State Director of Emergency Management and Homeland Security – Emergency Management and Homeland Security Division, Michigan State Police; District 7 Emergency Management and Homeland Security Division Coordinator

On April 13th 2026 Presque Isle County sustained severe property damage, injury or potential loss of life caused by severe flooding. As a result of this situation, the following exist: property continues to get damaged, roadways are inaccessible, life is at risk due to the widespread flooding that has gone on now for over 24 hours.

Therefore, as the Chairman of the Presque Isle County Board of Commissioners, in accordance with Section 10 of 1976 PA 390, as amended, I hereby declare that a "state of emergency" exists within our jurisdiction as of March 29, 2025, and that our local resources are being utilized to the fullest possible extent. The response and recovery elements of our emergency operations plan have been activated.

AUTHORIZED BY:

APRIL 14 2026

Clifford Tollini, Chairman
 Presque Isle County Board of Commissioners

Date

FOR IMMEDIATE RELEASE

Date: April 15, 2026

Contact: Tim Pritchard, Emergency Services Coordinator

Phone: 989-590-7811

Email: picoesc@picounty.org

Presque Isle County and American Red Cross to Open Emergency Shelter Amid Rising Floodwaters

In response to severe weather and rising water levels across Northern Michigan, Presque Isle County Emergency Management, in partnership with the American Red Cross, will open an overnight emergency shelter tomorrow, **April 16, 2026, at 12:00 PM**. This shelter is being established to provide a safe, warm environment for residents who have been displaced or are facing unsafe conditions in their homes.

Shelter Location: BELNAP TOWNSHIP HALL

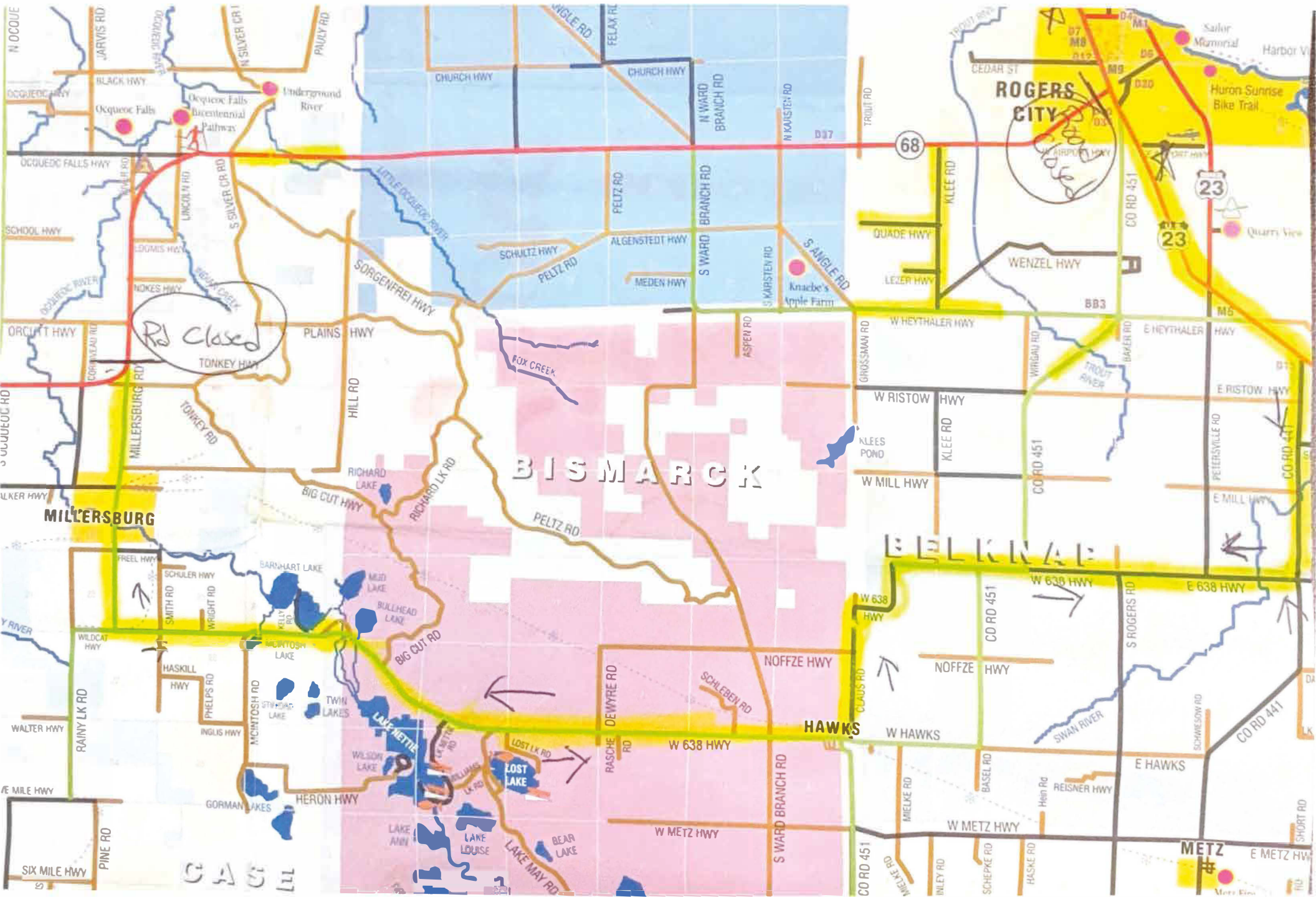
1720 W 638 Hwy, Rogers City, MI. 49779

What to Bring:

Residents are encouraged to bring essential items for their comfort and safety, such as:

- Prescription medications
- Extra clothing, pillows, and blankets.
- Personal hygiene items (soap, toothbrush, etc.).
- Important documents and identification.
- Special items for children (diapers, formula, toys).

The [American Red Cross](#) will provide meals, cots, and basic services to all those in need. Everyone is welcome at the shelter, regardless of whether they intend to stay overnight.



Rd closed

Rogers City

BISMARCK

BELKNAP

HAWKS

METZ

CAS